

# AUDUBON CANYON RANCH

Number 46

BULLETIN

Spring 2010

Honoring our Past & Celebrating the Future

## Gathering to Restore Oak Woodlands

by Jeanne Wirka and Jennifer Potts

On a recent Friday morning, 22 students from Sonoma Valley High School were playing “PVC golf” in the courtyard of David Bouverie’s house at Audubon Canyon Ranch’s Bouverie Preserve. Instead of clubs and greens, this golf game involves racing a golf ball across the courtyard through many short lengths of PVC pipe without touching the ball, dropping it, or going backward. It’s harder than it sounds, a fact not lost on the ACR staff members who, having been drafted to one of the two teams, are running in circles waving pieces of pipe.

After six or seven tries, one of the teams manages to convey their golf ball to the finish line amid an explosion of hoots and high fives. Laughing and energized, the students reconvene and get down to the business that brought them to the Bouverie Preserve in the first place: laying over a mile of drip line and installing emitters for the 400 oak trees they helped to plant back in December as part of ACR’s new habitat restoration project known as Project GROW (Gathering to Restore Oak Woodlands).

Project GROW, which is a partnership between Audubon Canyon Ranch and the Southern Sonoma County Resource Conservation District



**Students secure grow tubes with stakes to ensure the seedlings are protected when they emerge.**

(SSCRCD), grew out of ACR’s Habitat Protection 15-Year Action Plan, which identified the abandoned vineyards at the Bouverie Preserve as a high priority for ecological restoration. As luck would have it, Bouverie staff was approached about three years ago by the California Department of Transportation (CALTRANS), which needed to mitigate for oak trees that were lost due to construction

on Highway 12 and was therefore willing to fund restoration at the Bouverie Preserve. Because it could not contract directly with ACR due to its non-profit status, CALTRANS developed a cooperative agreement with the SSCRC, which then subcontracted the restoration to ACR. Through this agreement, ACR will receive approximately \$273,000 over the next four years to fund the

➤ Please turn to **GROW**, page 4

## BURNISHING ACR'S LEGACY

by Andy Lafrenz

PHOTO BY YVONNE PIERCE

Audubon Canyon Ranch has always been an organization that keeps one eye on the legacy of its past, protects and honors that legacy, while at the same time moving forward vigorously to fulfill its mission. Without the foresight, love, energy and hard work of such giants as Marty Griffin, Stan Picher and David Bouverie—just to name a few—ACR would not be where it is now. ACR is a premier environmental organization that protects large swatches of land in Marin and Sonoma counties for native plants and animals. Each year ACR brings hands-on nature-based education to thousands of schoolchildren and members of the general public and conducts important conservation science.

This year, to honor our past while looking to the future, ACR has launched its Founders Campaign in an effort to raise \$750,000 over three years. All this will lead up to our 50th Anniversary Campaign, which will commence in 2012.

These are very exciting times for Audubon Canyon Ranch. After many years as an effective and beloved Executive Director, Skip Schwartz has retired from his position. Thankfully, we have not lost the services of Skip,

who will continue as Senior Advisor and Executive Director Emeritus to lend his considerable talents in furthering ACR's work.

Stepping into Skip's giant footsteps is our new Executive Director Scott Feierabend. Scott comes from a long history of environmental work, including with the National Wildlife Federation and California Trout. He brings a new energy and enthusiasm that is electrifying our staff and volunteers. In the months ahead, we look forward to introducing him to the entire ACR community.

Meanwhile, the 2010 public season at Bolinas Lagoon Preserve is about to commence and, as I write, we look forward to the imminent arrival of those magnificent Great Blue Herons and Great Egrets, which nest in the redwood grove of the preserve's Picher Canyon. Additionally, docents of Bolinas Lagoon and Bouverie preserves continue to inspire joy and wonder in the schoolchildren who experience firsthand the native flora and fauna that inhabit our properties.

In northern Sonoma County, ACR biologists are working in close partnership with Jim and Shirley Modini to map the plant and animal



**Andy Lafrenz**

life on their magnificent 1,725-acre property, which will become the Modini Ingalls Ecological Preserve under the protection of ACR.

Audubon Canyon Ranch is committed to continuing that which it does best and to improving its ability to advance its tripartite mission by involving many diverse Bay Area communities.

To ACR donors and volunteers, I offer our heartfelt thanks for your commitment and support. I ask you to join our wonderful staff in continuing the legacy of our founders in advancing the cause of environmental education, conservation science and habitat protection on ACR's preserves.

Andy Lafrenz  
Ranch Guide and President of ACR  
Board of Directors

### Audubon Canyon Ranch

**FOUNDER**  
L. Martin Griffin, M.D.,  
*Emeritus Director*

**EMERITUS DIRECTORS**  
Deborah Ablin  
Richard B. Baird  
Nancy Barbour  
Jack Harper  
Flora MacLise  
George Peyton, Jr.  
Helen Pratt  
Paul Ruby

**BOARD OF DIRECTORS**  
**OFFICERS**  
Andy Lafrenz, *President*  
Judy Prokupek,  
*Vice President*  
Valerie Merrin, *Secretary*  
Bill Richardson,  
*Treasurer*  
**DIRECTORS**  
Julie Allecta  
Tom Bradner

Anna-Marie Bratton  
André Brewster  
Dave Chenoweth  
Mary Ann Cobb  
Kevin Consey  
Sam Dakin  
Leslie Flint  
Jesse Grantham  
Bryant Hichwa  
Diane Jacobson  
David Kavanaugh  
Barbara Kosnar  
Susan Moritz

Dan Murphy  
Doug Murray  
Ivan Obolensky  
Jane Sinclair  
April Starke Slakey  
Stephen Smith  
Sue Stoddard  
Lowell Sykes  
Francis Toldi  
Patrick Woodworth

**ACR ADVISORS**  
Tom Baty  
Gordon Bennett  
Len Blumin  
Patti Blumin  
Noelle Bon  
Suzie Coleman  
Hugh Cotter  
Michelle Dench  
Roberta Downey  
Peter Ehrlich  
Binny Fischer  
Tony Gilbert

Christina Green  
Robert Hahn  
Jim Horan  
Turk Kauffman  
Joshua Levine  
Alan Margolis, M.D.  
Leslie R. Perry  
Gerry Snedaker  
Betsy Stafford  
Jean Starkweather  
Robert Yanagida  
Nancy Young

# THE YEAR 2060 – WHAT WILL BE THE FACE OF AUDUBON CANYON RANCH?

by Scott Feierabend

PHOTO BY BRITT HENKE

As Audubon Canyon Ranch approaches its 50th birthday, one can't help but marvel at how the organization has grown and matured, and the force it has become in preserving the rich biological treasures of Marin and Sonoma counties. The seeds first planted by founders like Marty Griffin, nourished by Skip Schwartz, and cared for by hundreds of volunteers have flourished into one of the most credible, effective, and inspirational environmental organizations in the Bay Area.

That Audubon Canyon Ranch today remains a critical voice for conservation science, a model for habitat restoration, and a leader in environmental education is testament to its relevancy and to its leadership. When ACR's 50th anniversary arrives, we will come together as a community to celebrate, to rejoice, and to reflect on the long list of achievements we have collectively accomplished since 1962. And, although it is important to take the time to look back and recount our successes, it is equally important to look ahead to the future and avoid complacency that can settle into an organization as vibrant and alive as ACR.

So... what will be the face of Audubon Canyon Ranch in 50 years when 2060 rolls around? While it is impossible to predict with any certainty, I expect ACR will be even stronger, even more influential and even more effective in providing leadership in science, education and restoration programs and will be best-of-class in delivering our mission.

Two strategies will be required for my prediction to be realized. First, the ACR community—defined broadly as volunteers, donors, board and staff—must become “enablers” as well as “doers.” The environmental challenges we face today—children disconnected from nature, climate change and sea level rise, habitat destruction, and misguided policies that favor short-term gain over long-term sustainability—will only increase in complexity and scope in the coming decades. There will never be adequate staff, board or volunteers to meaningfully and effectively meet these challenges.

This is why we need to inspire, train, educate and unleash a cadre of next-generation conservationists to do our work for us. Unless we embrace the concept of “enabling” others to carry our cause, and until we shed the need



**Scott Feierabend**

to always be the “doers,” we will never reach the critical mass needed to bring about truly transformational change for the natural world.

Second, we must evolve into “one ACR.” Much of what makes Audubon Canyon Ranch such a special and unique organization is the diversity of properties we protect and manage. The diversity of places where we work has at times led to confusion—within our own family and with the public—as to who exactly is ACR. Some see us through the lens of our cutting edge conservation science programs at the Cypress Grove Research Center; others see us through our unparalleled educational programs at Bouverie and Bolinas Lagoon preserves; while still

> Please turn to **Executive Director**, page 11

**STAFF**

J. Scott Feierabend, *Executive Director*  
 John Petersen, *Associate Director*  
 Maurice A. 'Skip' Schwartz, *Senior Advisor and Executive Director Emeritus*  
**EDUCATION, CONSERVATION SCIENCE AND HABITAT PROTECTION**  
 John Kelly, Ph.D., *Director of Conservation Science & Habitat Protection*

Sherry Adams, *Biologist, Modini Ranch*  
 Emiko Condeso, *Biologist/GIS Specialist*  
 Matthew Danielczyk, *Vegetation Management Project Leader*  
 Dan Gluesenkamp, Ph.D., *Director, Habitat Protection & Restoration*  
 Gwen Heistand, *Resident Biologist, BLP/Co-Director of Education*  
 Sarah Millus, *HP Field Biologist*

Jennifer Potts, *Habitat Protection and Restoration Project Leader, BP*  
 Claire Hutkins Seda, *Weekend Program Facilitator, BLP*  
 Doug Serrill, *Habitat Protection and Restoration Marin Project Leader*  
 Jeanne Wirka, *Resident Biologist, BP/Co-Director of Education*

**PRESERVE STEWARDSHIP**  
 Bill Arthur, *Land Steward, BLP*  
 David Greene, *Land Steward, CGRC*  
 John Martin, *Land Steward, BP*  
 Matej Seda, *Maintenance Assistant, BLP*  
**ADMINISTRATION**  
 Yvonne Pierce, *Administrative Director/BLP Manager*

Leslie Sproul, *Receptionist/Office Assistant, BLP*  
 Nancy Trbovich, *Administrative Manager, BP*  
 Bonnie Warren, *Administrative Manager, CGRC*  
 Barbara Wechsberg, *Cashier/Receptionist, BLP*  
 Raquel Ximenes, *Administrative Assistant, BLP*

**FINANCE AND DEVELOPMENT**  
 Didi Wilson, *Director of Development & Communications*  
 Britt Henke, *Development Assistant*  
 Jennifer Newman, *Development Manager*  
 Stephen Pozsgai, *Controller*

## Honoring our Past & Celebrating the Future

### **GROW** from page 1

restoration and an additional \$140,000 as a stewardship fee once the project is completed to care for the trees in perpetuity.

While the ultimate purpose of Project GROW is to restore eight acres of oak woodland, the approach is based on education, participation and community. In addition to relying on Bouverie Stewards—habitat restoration volunteers—and members of the community to help out, Project GROW benefits from the participation of high school students through the SLEWS Program. SLEWS, which stands for Student and Landowner Education and Watershed Stewardship, links high school classes with restoration projects to benefit both the students and the landowners. SLEWS is the brainchild of the Center for Land-Based Learning, located in Winters, California, which coordinates the program throughout the state. Locally, the SLEWS program is sponsored by the SSCRC, ACR's partner in Project GROW. Through a series of field days and classroom visits, students participate in and learn about all phases of restoration projects including planting, installing irrigation and tree protectors, controlling weeds and monitoring. SLEWS also fosters team-building (hence the PVC golf), leadership and career exploration.

“By offering students this hands-on experience and mentorship by professionals in the field, this could be a jumping point for their interest in higher education, careers, and a lifelong ethic of stewardship

in their community,” explains Nina Suzuki, who coordinates the SLEWS program.

No one is more excited about the opportunity that Project GROW is providing the Sonoma Valley High School students than their teacher Christina Story. Story teaches Plant and Soil Science, an elective for juniors and seniors, which draws students interested in plants, agriculture and the environment. When approached to participate in Project GROW last summer, she jumped at the chance.

“Not only are the students given a chance to learn in a hands-on environment, they can take pride in restoring an ecosystem in their own community,” she observes. Story, who was herself a participant in another Center for Land-Based Learning program when she was in high school, knows firsthand that experiential learning can make a lifelong difference in a student's life.

“Project GROW is a great opportunity for students to work closely with professionals and learn about options available to them in fields that they may not have thought about before” she says.

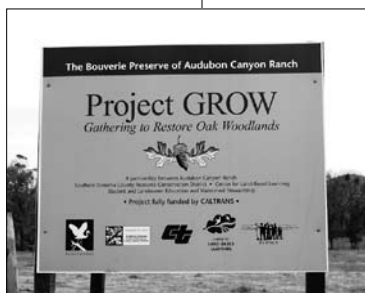
ACR science staff members who are lending their expertise as mentors for the project include Bouverie HPR Project Leader Jennifer Potts, Bouverie Resident



**ACR Project Leader Doug Serrill (left) shows a student how to attach a drip irrigation emitter.**

Biologist/Co-Director of Education Jeanne Wirka, Marin HPR Project Leader Doug Serrill, and Biologist/GIS Specialist Emiko Condeso.

Collaboration among ACR staff goes beyond serving as mentors, however. Indeed, Project GROW has been the catalyst for increased inter-preserve cooperation among both ACR staff and volunteers. For example, the GROW Project plan calls for planting not only oak trees, but associated oak woodland species such as Pacific madrone, California buckeye, toyon, and creeping snowberry (see sidebar). Bouverie Stewards and other volunteers will collect seeds and cuttings of these plant species, which Bolinas Lagoon Preserve volunteers will then propagate in the native plant nursery at ACR's Bolinas Lagoon Preserve.



Honoring our Past & Celebrating the Future

According to Doug Serrill, the nursery serves as a hub of restoration activity for ACR. “The nursery is a great way for building community both with plants and with people,” says Doug, who is overseeing seed collection and propagation efforts for Project GROW. Doug is also coordinating a growing cadre of Bolinas Stewards—volunteers who meet weekly to assist at the nursery and at other habitat restoration sites at the Bolinas Lagoon Preserve.

Even with the combined efforts of staff, volunteers and SLEWS students, Project GROW is a major undertaking for ACR, and results will not be immediately apparent. Oaks can take several years just to stretch a few feet above the ground, and they usually don't begin to produce a healthy crop of acorns until they are between 80 and 100 years old. While collecting acorns

and planting trees are fun and exciting, much of the work in years to come will involve control of invasive species like velvet grass and calendula, tasks requiring a perseverance all too familiar to scores of ACR's habitat restoration volunteers.

The goal, however, is invaluable. Mature oak woodlands support the highest number of plant and wildlife species of any habitat in California, including over 2,000 plant species; 330 species of birds, mammals, reptiles and amphibians; and 5,000 species of insects. Over fifty species of birds and mammals depend on acorns as their dietary staple, and numerous others rely on oaks for nesting cavities and shelter.

The active portion of Project GROW will continue through the summer of 2013. SLEWS students will participate for three of the four years of the project. There will be ample opportunities for volunteers to become involved through regularly-scheduled



Emiko Condeso shows students Brayan Laurel and Jazmine Ramirez how to mark the location of oaks using GPS.

HPR workdays at both the Bouverie Preserve and the nursery at the Bolinas Lagoon Preserve.

So, remember, the “G” in GROW stands of “Gather”. We hope you are able to gather with us soon to participate in this important project. For information, please contact Jennifer Potts, HPR Project Leader, Bouverie Preserve, at 707.935.8417 or [jpotts@egret.org](mailto:jpotts@egret.org).

Jeanne Wirka is the Resident Biologist at Bouverie Preserve and ACR's Co-Director of Education. Jennifer Potts is the Habitat Protection and Restoration Project Leader at Bouverie Preserve.

Native species to be planted as part of Project GROW
Coast live oak ( <i>Quercus agrifolia</i> )
Blue oak ( <i>Q. douglasii</i> )
Oregon oak ( <i>Q. garryana</i> )
Black oak ( <i>Q. kelloggii</i> )
Valley oak ( <i>Q. lobata</i> )
Pacific madrone ( <i>Arbutus menziesii</i> )
California buckeye ( <i>Aesculus californica</i> )
Big-leaf maple ( <i>Acer macrophyllum</i> )
Toyon ( <i>Heteromeles arbutifolia</i> )
Blue elderberry ( <i>Sambucus mexicana</i> )
Sticky monkeyflower ( <i>Mimulus aurantiacus</i> )
Sticky monkeyflower ( <i>Mimulus aurantiacus</i> )
California honeysuckle ( <i>Lonicera hispidula</i> )
California pipevine ( <i>Aristolochia californica</i> )
Creeping snowberry ( <i>Symphoricarpos mollis</i> )
Blue wildrye ( <i>Elymus glaucus</i> )
Purple needlegrass ( <i>Nassella pulchra</i> )
California oniongrass ( <i>Melica californica</i> )
Soaproot ( <i>Chlorogalum pomeridianum</i> )
Mules ears ( <i>Wyethia angustifolia</i> )
Snakeroot ( <i>Sanicula crassicaulis</i> )



Mature oak woodland at the Bouverie Preserve provides the template for Project GROW.

*Early Detection***GOOD FOR THE HUMAN, GOOD FOR THE PLANET***by Dan Gluesenkamp*

Of all the ways that humans are changing the earth, biological invasions are the most enduring. Human transport of organisms is reconnecting continents, resulting in harmful invasions such as Sudden Oak Death, French broom, and West Nile Virus. Invasions are now the second leading cause of extinction and are very long-lasting. It will be millions of years before new species evolve to replace those lost to the biological invasion crisis.

Human medicine has dealt with analogous challenges and established early detection and rapid response (EDRR) as critical for protecting human health. While early detection is widely recognized as the most cost-effective approach—yielding \$34 in benefit for every dollar spent—there are few EDRR efforts serving wildlands. Advances in information technology and improved coordination among environmental professionals now make it possible to set up robust early detection systems.

Protecting the natural resources of its sanctuaries is the core mission of Audubon Canyon Ranch. With the support of partners like the Dennis & Carol Ann Rockey Fund of the Marin Community Foundation and ACR

**Douglas iris**

Partners in Conservation, our Habitat Protection and Restoration program is serving this mission by building local and regional solutions. ACR's EDRR project, led by Vegetation Management Project Leader Matthew Danielczyk, supports science staff and volunteers in finding and mapping new infestations of harmful invasive plants. We then scientifically prioritize individual patches so that the most dangerous outbreaks can be removed before they spread and harm. We remove the easiest and most harmful first, while removal is cheap and before ecosystems have been harmed.

To ensure that our local work has regional impact, we have worked with Andrea Williams from the Marin Municipal Water District and others to

create a regional network coordinating EDRR across the nine-county Bay Area. This Bay Area Early Detection Network (BAEDN) now includes hundreds of participants from dozens of agencies and organizations.

The Audubon Canyon Ranch EDRR project is about more than protecting ACR's sanctuaries against weeds, and it is about more than saving millions of dollars now spent managing invasive plants across the Bay Area. The project is about building a framework for the rational conservation of biological diversity in an era of dramatic environmental change. Virtually every climate change adaptation plan published has identified invasive plant management as a key strategy for saving ecosystems and species; similarly, mapping, prioritization and regional coordination are consistently identified as key needs for dealing with climate change.

The EDRR networks that Audubon Canyon Ranch is building are early steps in an efficacy revolution that will give us the conceptual tools and technical infrastructure for saving the ancient biodiversity of places we love.

*Dan Gluesenkamp is ACR's Director of Habitat Protection and Restoration.*

**THE MISSION OF AUDUBON CANYON RANCH**

Audubon Canyon Ranch protects the natural resources of its sanctuaries while fostering an understanding and appreciation of these environments. We educate children and adults, promote ecological literacy that is grounded in direct experience, and conduct research and restoration that advances conservation science.

[www.egret.org](http://www.egret.org)

*A Conservation Ethic***THE EARLY HISTORY OF AUDUBON CANYON RANCH**

Growth and executive transition inspire reflection on the past and appreciation for “where we’ve been.” As Audubon Canyon Ranch *Honors its Past and Celebrates the Future*, we’d like to take this opportunity to tell the story of how it all began....

*A Lasting Impression*

In 1933, a 13-year-old Boy Scout from Oakland visited the coast of Marin County. He came upon dozens of herons and egrets feeding in the Bolinas Lagoon. They made a lasting impression.

In 1940, the scout, L. Martin “Marty” Griffin, had grown into a Stanford premed student who revisited the area on an ornithology field trip. During that visit, Marty saw over one hundred pairs of herons and egrets nesting high up in a concentrated grove of redwoods overlooking the lagoon. The grove was located in a dairy farm named Canyon Ranch.

“At the time,” says Marty, now retired and living in Belvedere, “little did I dream that saving those birds

and their home would become the passionate goal of my life.”

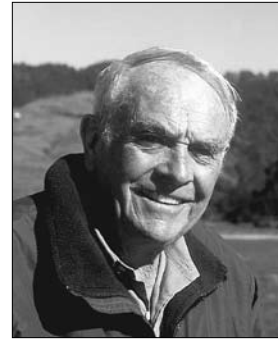
In the late 1950s as a young internist practicing at a Ross family clinic, Marty became incensed by state plans to build a coastal freeway along Highway One from the Golden Gate Bridge and to turn Bolinas Lagoon into an upscale yacht marina.

“I knew one way to stop the freeway was to buy land in its path,” he says, “and if that land held the heronry, so much the better.”

*A Few Committed Citizens*

So, in 1961 as president of the Marin Audubon Society, Marty waged a fundraising campaign with San Francisco businessman Stan Picher and the help of other local Audubon Society chapters and many dedicated individuals. They purchased 503 acres of Canyon Ranch for \$335,000—or about \$666 an acre.

“Even for the times,” as Marty says, “the price, terms and conditions were favorable.” The purchase not only helped stop the freeway and marina from being built, but it saved the birds’

**Marty Griffin**

nesting and eating place and helped preserve Bolinas Lagoon and Tomales Bay.

Thus, Audubon Canyon Ranch was created as an

independent, non-profit organization. Over the following years, ACR would acquire 500 more acres adjacent to Bolinas Lagoon, saving 1,000 acres of important coastal habitat in perpetuity.

Thanks to the vision and conservation ethic of a few committed citizens, the coast of Marin looks very different today than it might have had the bulldozers arrived.

We are eternally grateful.

**&** The map on the following pages, from *Saving the Marin-Sonoma Coast* by L. Martin Griffin, M.D., details the next chapter of ACR’s conservation effort.

**\* Save the date! \***

Audubon Canyon Ranch

**Donor Appreciation Barbecue & 90th Birthday Party for ACR Founder Marty Griffin**

Saturday, July 24, 2010 • 11 am – 3 pm

With a special appearance by bluegrass musicians Laurie Lewis, Tom Rozum and the Right Hands

Bolinas Lagoon Preserve’s Picher Canyon

Tickets: \$50

Open to all. Watch [www.egret.org](http://www.egret.org) for more event details and opportunities to purchase tickets.

*Join us as we thank ACR’s supporters and wish Marty happy birthday!*

Today, Audubon Canyon Ranch conducts preservation, education and research programs on 2,000 acres in Marin and Sonoma counties, including the 1,000-acre Bolinas Lagoon Preserve near Stinson Beach, properties along Tomales Bay including Cypress Grove Research Center, and the 535-acre Bouverie Preserve in Glen Ellen. ACR is also in a collaborative agreement with Jim and Shirley Modini to acquire the 1,725-acre Modini Ranch in the Mayacamas Mountains near Healdsburg.

Reproduced from *Saving the Marin-Sonoma Coast* by L. Martin Griffin, M.D. (1998, Sweetwater Springs Press), this map details the years after the land now known as Bolinas Lagoon Preserve was saved from development and Audubon Canyon Ranch continued its conservation ethic along Tomales Bay.

## *Audubon Canyon Ranch Strategic Acquisitions on Tomales Bay, 1968-1985 — 432 Acres*

### **Cypress Grove Preserve Headquarters**

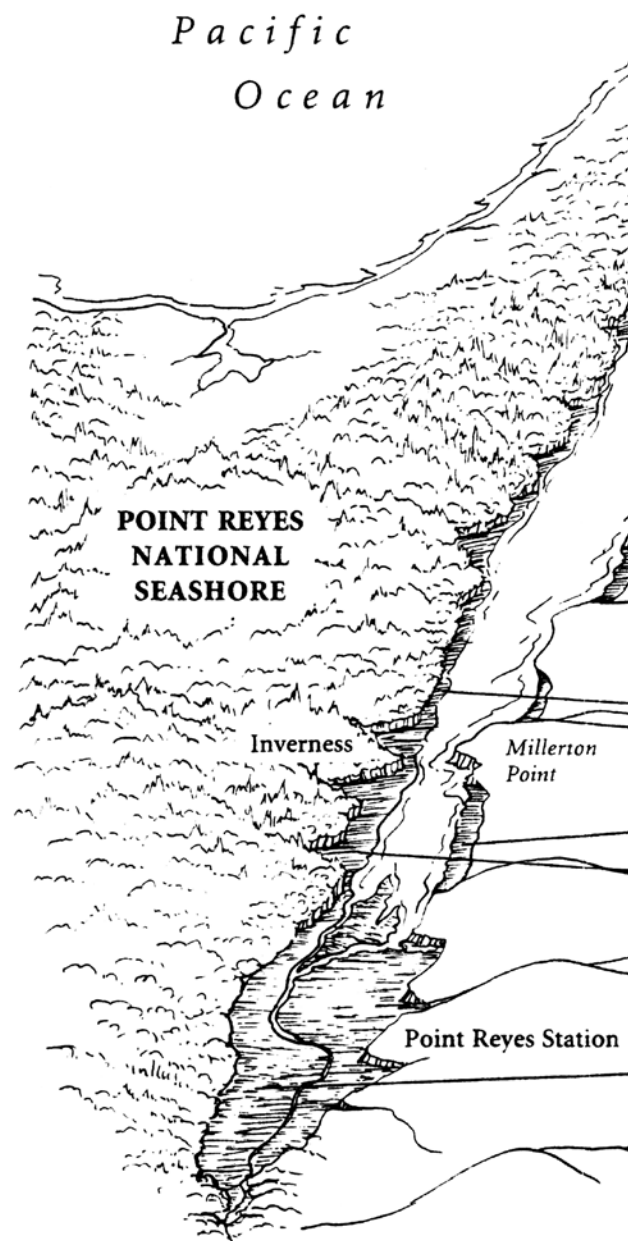
Located between Tomales Bay and Highway 1, with a commanding view of the Point Reyes National Seashore and Tomales Bay, Cypress Grove's restored Victorian hunting lodge houses educational and research facilities for salt and freshwater marsh and chaparral habitats. The Preserve is a major resting area for migratory birds on Pacific Flyway.

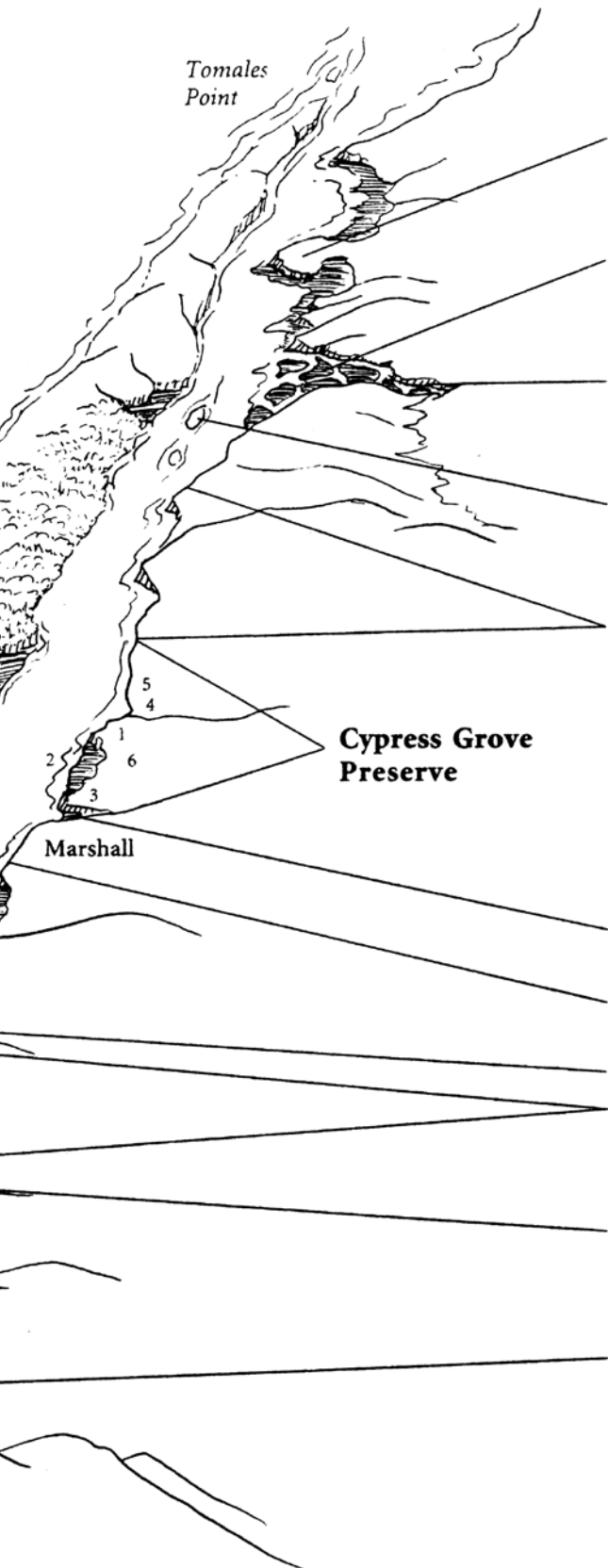
1. **Cypress Grove Promontory**, a stop on 1875 Sausalito-Russian River railroad, 10-acre gift from Clifford Conly, Jr. in 1971.
2. **Johannson Oyster Tideland** purchases, 20.3 acres protecting Cypress Grove and access to bay, cost \$25,000.
3. **Delta of Marshall Creek**, salt marsh and willow creek habitat, 14.53 acres protecting southern boundary of Cypress Grove, cost \$14,756.
4. **Livermore Marsh**, fresh and salt water habitat to the north, 26 acres protecting the delta of Cerini Creek, cost \$29,000.
5. **Part of Cerini Ranch** (rolling grasslands) between the bay and Highway 1, 57 acres protecting northern boundary, cost \$68,601.
6. **Part of Hall Ranch**, 41 acres of chaparral habitat, between Cypress Grove and Highway 1, cost \$52,986.

*This map by Ane Rovetta depicts Audubon Canyon Ranch properties purchased or donated along Tomales Bay.*

Illustration courtesy The Bancroft Library  
University of California at Berkeley

call number: BANC MSS 2003/102c





**Toms Point Wildlife Sanctuary**, half-mile of tidelands frontage, commanding views, grassland habitat, no access, 71-acre gift from Margaret Quigley in 1985.

**Keys Creek/Walker Creek Delta Saltwater Wildlife Sanctuary**, 96.74 acres, rich bird and aquatic life habitat with sinuous tidal canals, no access, cost \$15,500.

**Keys Creek**, 5-acre parcel, cost \$13,000. Given to California Department of Fish and Game by Audubon Canyon Ranch for fishing access.

**Hog and Duck Islands**, 8.25 acres guarding oceanic habitat of black brant, harbor seal haul out and eelgrass beds, cost \$47,250. \*

**Certain Audubon Canyon Ranch Tidelands** plus 26 acres of the Cerini purchase were donated to California State Parks Department to complete the purchase of proposed Angress Ranch Development bordering the bay north of Cypress Grove: Kiefer Tidelands, 1.04 acres; Tideland gift, .25 acres; and Tidelands south of Nick's Cove, 8.1 acres, cost \$13,500.

**Other Tideland Sanctuaries to protect the shoreline:**

*Berg Tideland Parcel*, south of Marshall Tavern, 1.33 acres.

*Johannson Tideland Parcel*, one-acre at base of Marshall Boat Works bluff.

*Inverness Tideland Parcel*, Vision Road, .62 acres.

*Johannson Tideland Parcel*, 9 acres south of Millerton Point near Tomales Bay State Park, long and narrow, was used for oyster growing.

**Shields Marsh Preserve**, 4 acres near Inverness Park overlooking 500-acre Tomales Bay State Ecological Preserve, cost \$10,000.

**Olema Marsh Preserve**, 42 acres at south end of the bay, part of largest freshwater marsh in the County, rich habitat restored, cost \$51,500.

\* Note: In 1996, these lands were donated to the National Park Service.

## LEAVING LEGACIES

by Maurice A. "Skip" Schwartz

People ask me about the handsome cloisonné lapel pin I often wear. The pin features a Great Egret—a white silhouette in a center of green—and is awarded to members of ACR's Clerin Zumwalt Legacy Circle.

*As guardian of these sanctuaries and as a public benefit organization, ACR has an ongoing responsibility to care for these lands and the residing flora and fauna in perpetuity.*

Clerin "Zumie" Zumwalt was ACR's first naturalist. He left his mark of love and respect for nature on the people and preserves of Audubon Canyon Ranch. You've read elsewhere in this Bulletin about ACR's visionary Founder and Emeritus Director Marty Griffin. Marty grasped the importance of ACR's sanctuary lands as levers, vital components and pressure points for

stopping the commercial development slated for West Marin. He helped create a fabric of beautiful parks and nature sanctuaries: wild habitats that became a legacy not only for us, but for all the people of the Bay Area and the world. Marty is still actively supporting ACR and encouraging us to keep up the good work.

I feel honored to have inherited such a spectacular legacy and have worked for over 35 years to help grow this healthy organization and to expand on the vision of Zumie, Marty, Stan Picher, Clifford Conly, David Bouverie and so many others.

Our founders' legacy inspires us all to support and grow Audubon Canyon Ranch into an organization that will soon hold 5,000 exceptional acres of habitat and education facilities in trust for the greater good through ACR's



preservation, education and research programs.

As guardian of these sanctuaries and as a public benefit organization, ACR has an ongoing responsibility to care for these lands and the residing flora and

fauna in perpetuity. ACR provides education programs that make a difference and conducts conservation science that informs its land protection and habitat restoration goals.

Will you please join me in becoming a Zumwalt Circle member? Help ACR provide for the future. Help pass the torch to the next-generation. If you trust us to do this work, one great way to help—big or small—is to leave ACR a legacy gift... to ensure that we can carry on the ACR mission in perpetuity.

*Maurice A. "Skip" Schwartz is Senior Advisor and Executive Director Emeritus.*



**Bouverie Preserve spring wildflowers**

### The Clerin Zumwalt Legacy Circle honors supporters who have included ACR in their estate plans.

#### CIRCLE BENEFITS

- ◆ Invitation to the Annual Legacy Circle luncheon held on an ACR preserve
- ◆ Invitations to donor appreciation events and hikes
- ◆ Listing in the ACR Grove of Honor in The Bolinas Lagoon Preserve's Display Hall
- ◆ ACR publications: the Bulletin and Ardeid
- ◆ Complimentary estate planning organizer
- ◆ ... and a handsome cloisonné lapel pin

*To receive information on ACR's Clerin Zumwalt Legacy Circle, contact ACR Director of Development Didi Wilson at 415.868.9244 ext. 13 or ACR's Planned Giving Specialist Phil Murphy at 415.457.7482.*

**Executive Director** from page 3

others see us through the nesting egrets and herons at our fabled Bolinas Lagoon Preserve. However, these are but parts of a much larger organization built on the tireless work of our volunteers, dedicated staff, generous donors and committed Board members. For ACR to remain at the forefront in tackling the enormous environmental challenges that await future generations, we must operate, speak, and collaborate as one.

So... what will ACR look like in the year 2060? Why don't you tell me? Pick up the phone (415.868.9244) or send me an email (scott@egret.org) and let me know what you think the future will be!



Scott Feierabend  
ACR Executive Director

**Scott Feierabend**  
**ACR Executive Director**  
*Biologist and non-profit leader serving the environmental community for nearly 30 years*

---

**Professional Background**  
California Trout, Interim Executive Director and Conservation Director  
Marin Conservation League, Executive Director  
The Nature Conservancy, Director of Conservation Programs  
National Wildlife Federation, Regional Vice President

---

**Education**  
Masters of Science, Wildlife Management, West Virginia University

*For more about Scott, visit [www.egret.org/ScottFeierabend.html](http://www.egret.org/ScottFeierabend.html)*

**VOLUNTEER SPOTLIGHT**

**Volunteering as a Family**

Volunteering is a family sport, and the Kauffman-Puchall family has found a playing field at Audubon Canyon Ranch, where they can pursue individual interests while spending time together.

Lauri Puchall and daughter Mara Kauffman are both Bolinas Lagoon Preserve Ranch Guides, volunteer naturalists who interpret the preserve's flora and fauna for the visiting public. "Mara favors newts," says husband/dad Turk Kauffman about his family's volunteer experience. "Lauri likes the plants and simply enjoys being outdoors."



**Turk, Mara and Lauri**

"When Lauri and Mara were in Ranch Guide training," Turk says, "they talked about egrets, herons, and their habitat. I started spending time with them on the preserve. I brought sketchbooks and a camera, which I used to capture details and qualities of light. I began observing nature more closely, and I met knowledgeable people who were excited about what they were doing. I studied the buildings in the landscape and found ways to participate that mesh with my own interests."

Turk, an architect with an office in Point Reyes Station, has since developed a design for a new Henderson Overlook at the Bolinas Lagoon Preserve... pro-bono. Recently, Turk was elected as an ACR Advisor.

"Collectively we have gained much as a family since becoming involved with ACR," says Turk.

A large cadre of stupendous volunteers supports Audubon Canyon Ranch; without them the preservation, education and research programs would not exist. Your gifts are varied and valuable, and we thank you all.

*by Anna-Marie Bratton, Bolinas Lagoon Preserve Docent, Ranch Guide and ACR Director*

PHOTO BY TURK KAUFFMAN

**Mother's Day BBQ**

Volunteer Canyon, Bolinas Lagoon Preserve  
Sunday, May 9, 2010



For approximately fifty years, the Marin Audubon Society has hosted this delightful fundraiser on Mother's Day, bringing families and friends together for a day of food and fun in the magnificent meadow of Volunteer Canyon. Proceeds benefit the education and conservation programs of Audubon Canyon Ranch and Marin Audubon Society. Call Mary Anne Cowperthwaite at 415.453.2216 for information. Space is limited. RSVP by May 3rd. Carpooling strongly encouraged!

\$20 per adult; \$10 children under 10. Mail your check payable to Marin Audubon Society to: 141 Oak Avenue, San Anselmo, CA 94960

Your check guarantees your reservation.

## Honoring our Past & Celebrating the Future

### THANK YOU ACR VOLUNTEERS!

Audubon Canyon Ranch salutes the hundreds of individuals listed below for their dedication to ACR and for generously donating time and energy as Docents, Ranch Guides, Ranch Hosts, Field Biologists, Researchers, Habitat Restoration and Workday Volunteers, Directors, and Advisors. You are the backbone of this organization! For all you do, we thank you!

Deborah Ablin	Mary Bicknell	Phillip Carlsen	Cheri L. Degenhardt	Ruth Friedman	David Heller
Nancy Abreu	Louise Bielfelt	Barbara Carlson	Jody Deike	Michelle Friend	Hugh Helm
Ken Ackerman	Sherman Bielfelt	Joyce Carlson	Larry DeGrassi	Kevin Fritsche	Guy Henderson
Joan Ann Albers	Bobbi Bird	Rich Carlson	Mary Dejesus	Miriam Frye	Andrea Hernandez
Bernadetta Alderson	Gay Bishop	Susan Carney	Ken Della Santina	Dennis Fujita	Earl Herr
Bonnie Alexander	Stephanie Bishop	Jeannette Carr	Diana DeMarco	Janet Gardiner	Logan Heyerly
Julie Allecta	Laurie Bissell	Kathy Carroll	Michelle Dench	George Gardiner	Bryant Hichwa
Jane A. Allen	Edith Black	Posie Carroll	Barbara Deutsch	Sharon Garell	Diane Hichwa
Jason Allen	Bonnie Blackaller	Tom Cashman	William Deyo	Jennifer Garrison	John Hickman
Judy Allen	Amy Blackstone	Rudy Castillo	Gwen Dhesi	Laurie Gaynor	Joanne Hickox
Kathy Allen	Rose Marie Blake	Linda Castrone	John Dineen	Daniel George	Holly Higgins
Linda Allen	Annabel Blakey	Linda Cederborg	Beverly Diplock	Jyoti Germain	Howard Higley
Sarah Allen	Patty Blanton	Candy Chaillaux	Kevin Dixon	Rebecca Geronimo	Pat Hildreth
Linda Alwitt	Giselle Block	David Chalk	Nancy Dolphin	Georgia Gibbs	Vicky Hill
Robert Alwitt	Diane Bloom	Leigh Anne Chandler	Cia Donahue	Marjorie Gibbs	Anne Hillsley
Rosemary Ames	Eileen Blossman	Robin Chase	Fairfax Donovan	Tony Gilbert	Diana B. Hindley
Carolyn Anderson	Leonard Blumin	Jan Cheek	Leslie K. Doughty	Jan Gilman	John Hirten
Janica Anderson	Patti Blumin	May Chen	Wendy Doughty	Mary Gleim	Maddie Hobart
Jennie Anderson	Ellen Blustein	Dave Chenoweth	Kayla Douglas	Beryl Glitz	Joan Hoffman
Judith Anna	Shirley Bogardus	Andrew Chilson	Robert Downey	Dohn Glitz	Philip Hoffman
Nina Antze	Eve Boling	Albert Chin	Betty Drake	Sally Gmelin	Walter Hoffman
Bill Arenander	Noelle M. Bon	Wally Chin	Richard Drechsler	Warren Gold	Ingrid Hogle
Thelma L. Arlom	Andrea Bond	Donna Chinlund	Caroline Dutton	Anne W. Goodwin	Ellen Holden
Barbara Armstrong	Suzanne Bond	Albert Chiu	Bob A. Dyer	Bill Gordon	Hannah Holiday
Jan Aston	Virginie Boone	Judy Clark	Joe Eaton	Laurie Graham	Marjorie Hollinger
Robert Aston	Janet Bosshard	Careana Clay	Betsy Eckstein	Donna Grant	Jim Horan
Dick Aston	Georgia Bostedt	Sara Clegg	Irene Ehret	Jesse Grantham	Ken Horner
Francine Austin	Jerry Bourne	John W. Clow	Peter Ehrlich	Barbara Gray	Roger Hothem
Shirley Austin-Peeke	Lynette Bourne	Brian Cluer	Dexter Eichhorst	Christina Green	Ann Howard
Audrey Ayers	Bruce Bowser	George Clyde	David Elliott	Philip Greene	Helen Howard
Lauren Ayers	Donna Boyd	Mary Ann Cobb	Nancy Elsner	L. Martin Griffin	Joan Howarth
Norah Bain	Connie Bradley	Suzie Coleman	Beth Ely	Deborah Grima-Lowe	Ann Hughes
Richard B. Baird	Tom Bradner	Hugo Condeso	Bill English	Daniel Grubb	Don Hughes
Ankie Bajema	Ellen Brantley	Ann Conger	Zach English	Sophia Grubb	Robert Hulbert
Justin Baker	Anna-Marie Bratton	Gail Connolly	Rick Ernst	Bonnie Grubbauer	Christine Hunter
Ted Bakkila	Joan B. Breece	Suzanne Conrad	Jean Espey	Sally Gude	Merle Hunter
Sharon Bale	André W. Brewster	Kevin Consey	Julie Evans	Marjorie Guggenhime	Robert Hunter, Jr.
Audrey Ball	Eleanor Briccetti	Robyn Contini	Todd Evans	Brian Gully	Claire Hunter Chow
Nancy Barbour	Ralph Britton	John Conway	Jules Evans	Brenda Gunn	Diane Huntton
Jeanette Barekman	Melissa Brockman	Glenda M. Cook	Karen Everard	Beth Gurney	Wanda Huot-Morgan
Carole Barlas	Jayne Brogan	Jim Cooke	Marjorie Everidge	Pamela Hagen	Sam Hutkins
Gail Barrett	Mary Lee Bronzo	Mickey Cooke	Jeff Fairclough	Julie Hahn	Lynda Hutton
Judy Barrie	Michael Ann Brown	Patti Cooke	Nancy Falk	Robert E. Hahn	Josy Ingersoll
Bill Barton	Janet Bruno	Judith Corning	Mark Fenn	Linn Hakala	Charlotte Irvine
Patricia Barton	Susan Bundschu	Sue Cossins	Catherine Ference	Alyssa Hall	Susan Ives
Brian Bartsch	Shannon Burke	Hugh Cotter	Jane L. Ferguson	Karlene Hall	Jenifer G. Jackson
Katy Baty	Carol Burns	Sandy Coyle	Margaret Field	Leigh Hall	Joli Jacobs
Tom Baty	Joe Burns	Cindy Craig	Joan Finkle	Madelon Halpern	Diane Jacobson
Daria Bauer	Elizabeth Burrige	Patti Craves	Binny Fischer	Lauren Hammack	Scott Jarvis
Helen Beale	Neil T. Burton	Sylvia Crawford	Ruth Fisk	Don Hanahan	Norma Jellison
Jason Begley	Phil Burton	Ellen Crockett	Cynthia Fleischer	Lillian Hanahan	Bobbie Jenkins
Cheryl Belitsky	Kathy Burwell	Linda Curry	Virginia Fletcher	Gabe Hand	Rita Jennings
David Belitsky	Kate Bystrowski	Sharon Dado	Leslie L. Flint	Sheila Handley	Beverlee Johnson
Douglas C. Bender	Denise Cadman	Kit Daine	Sam Flood	Linda Hanes	Lorraine Johnson
Jennifer Benham	Gayle Cahill	Sam Dakin	Susie Fogg	Sherri Hansell	Matt Johnson
Phyllis Benham	Miriam Campos	Frank Dane	Christine Fontaine	Fred Hanson	Rick Johnson
Gordon Bennett	Cathleen Cannon	Justine Daniel	Jobina Forder	Deyea Harper	Gloria Jones
Shelly Benson	Linda Cantel	Sharon Dankworth	Mark Forney	Elizabeth Harper	Marlene Jordan
Peter Bergen	Heather Carey	Ann D. Davis	Mike Franklin	Jack F. Harper	Diana Jorgensen
Evelyn Berger	Karen Carey	Dawn Davis	Inge Fraser	Roger Harshaw	Linda Josephs
Gail Berger		Karen Davis	Judy Freedman	Kacey B. Hart	Linda B. Judd
Steve Berger		Marty Davis	Andrea Freeman	Elizabeth D. Hartsook	Gail Kabat
Jim Berkland		Melissa Davis	Jamie Freymuth	Alison Hastings-Pimentel	Chris Kasman
E. Candace		Sarah Davis	Amy Friberg	Will Haymaker	Katherine Delmar Burke
Berthrong		Marta Dee	Alice Friedemann	Audrey Hazen	School Students



## Honoring our Past & Celebrating the Future

Mara Kauffman	Art Magill	Kenneth E. Niehoff	Bill Richardson	Stephen Smith	Sylvia Victor
Turk Kauffman	Lyn Magill	Spencer Nielsen	Rudi Richardson	Ben Snead	Rosalie Vieira De Araujo
David Kavanaugh	Alan J. Margolis	Terry Nordbye	Maria Rivera	Jan Gerrett Snedaker	Norma Vite
Guy Kay	Joann Marker	Brenden Norris	Lynn Robbie	John Somers	Sasha Vitomski
Carole Kelleher	Gloria Markowitz	Grace Noyes	Vicki Robinson	Karen Sommer	Nancy Vizi
Anne Kelley	Anita Marquis	Tilly Nylin	Will Robinson	Noellene Sommer	Diane Voorhoeve
Maureen Kennedy	Virginia Marshall	Jackie Nystrom-Parker	Jennifer Robinson	Amy Southwick	Mary C. Wagner
Pamela Kerr	Andrew Martin	Patricia O'Brien	Maddox	Barbara Spangler	Sandra Wald
Richard L. Kettler	Charlotte Martin	Edna O'Connor	Stan Roodman	Sachi Spaulding	Eleanor Wales
Audry King	Virginia Martin	Sheila O'Donnell	Jayne Rosantsson	Robert Speckles	Susan Walker
Diana King	Richard Martini	John O'Reilly	Laura Rosas	Linda Spence	Roberta Wall
Douglas King	Peter Mason	Ivan Obolensky	Emily Rose	Pat Spencer	Ann Walsh
Emma King	Nancy Mavis	Nancy Okada	Judy Rose	Robert Spofford	Tom Walsh
Charlie Klein	Alicia Mayorga	Carol Orma	Glenda Ross	Sue Spofford	Tanis Walters
Margaret Klein	Pat McCaffrey	Jessica Orr	Andrew Roth	Jean An Sprague	Christine Walwyn
Anni Klose	Judy McCarthy	Earle W. Owen	Christine Rothenbach	Craig Spriggs	Chris Ward
Bhavani Kludt	Grace McCaull	Laura Owens	Paul J. Ruby	Jane Spriggs	Pat Warren
Karen Knudtsen	Laurel McCaull	Janet Oyen	Marge Rudell	Betsy Stafford	Cara Wasden
Gary Kohlhaas	Mark McCaustland	Manuel O. Pacheco	Mel Ruiz	Jude Stalker	Richard Wasson
Barbara Kosnar	David McConnell	Cari Paganini	DeAnn Rushall	Ellie Stanfield	Karen Watkins
Harriet L. Kostic	Matthew McCrum	Renee Palace	Jennifer Ryenga	Shelby Stansfield	Marilyn Watkins
Martin Koughan	Chris McHale	Robert J. Parker	Ellen Sabine	Barbara Starke	Penny Watson
Ellen Falconer Krebs	Jeanne McHenry	Carol Patel	Maryla Salt	April Starke Slakey	Kathleen Watson
Carol Kuelper	Lydia Mendoza	Lois E. Patton	Dianne Samples	Jean Starkweather	Wesley Weathers
Pat LaBerge	Diane Merrill	Tony Paz	Stacey Samuels	Liz Sterns	Lisa Weber
Norah J. Laffan	Valerie Merrin	Emily Pellish	Roger Sanborn	Laurel Stevenson	Anna Webster
Andrew Lafrenz	Barbara Meyer	Brittany Penoli	Jeff Sanchez	Linda Stewart	Lynn Webster
Diane Lafrenz	Regina Milavec	Genevieve Perdue	Jack Sandage	Walter Stewart	Barbara Wechsberg
Amy LaGoy	Bob Milbourn	Jay Peretz	Marilyn Sanders	Susan Stoddard	Judy Weiner
Maureen Lahiff	Bill Millard	Beverly Perrin	Diana Sanson	Serena Stoepler	Arlene Weis
Joan Lamphier	Macell Millard	Leslie R. Perry	Tyler Sarter	Michelle Stone	Jim Wellhouse
Brett Lane	Audrey Miller	Kate Peterlein	Sharon Savage	Tina Styles	Grace Wellington
Deborah Large	Flavia Millikan	Ray L. Peterson	Susan B. Schermerhorn	Stephanie Sugars	Jane Wellington
Freida Larson	Sarah Minnick	Margaret Petrie	Richard Schiller	Judy Sullivan	Martha Wessitsh
Judy Laursen	Austin Missner	Catherine Petru	Phyllis Schmitt	Ron Sullivan	Mildie Whedon
Dakota Lawhorn	Heidi Mitarai	George S. Peyton	Richard Schneider	Joan Sutter	Jim White
Scott Lawyer	Eileen Mitro	Dominique Peytraud	Craig Schorr	Lowell Sykes	Tom P. White
Gaye LeBaron	Jan Moffet	Marcia Phipps	Alice Schultz	Judy Temko	Dave Whitridge
Barbara Leder	Jim Moir	Bill Pierce	Harold Schulz	Mike Terwilliger	Danya Wiebalk
Galen Leeds	Carol Moller	Marcy Pinetti	Theresa Schulz	Janet Thiessen	Adele Wikner
Gilles Lefevre	Corinne Monahan	Ann Piper	Thea Schurer	Eric Thistle	Diana Wilkiemeyer
Lamar Leland	Steve Monroe	Sarah Pola	John Schwonke	Les Thompson	Philip Wilkiemeyer
Dick Lemon	Debra Moore	Julia Pollock	Marilynn Scott	Wayne Thompson	Julia Wilkinson
Stephanie Lennox	Stephen Moore	David Poss	Maria Scott	Mona Tieche	Cathy Williams
Colleen Leof	Elaine Moreno	Helen M. Pratt	Lindsey Segbers	Ruth Tjerandsen	Don Williams
Robin Leong	Angela Morgan	Grace Pratt	Lee Seidner	Steve Tokar	Matthew Williams
Gail Lester	Beverly Morgan	Susan Preneta	Steve Shaffer	Francis Toldi	Liz Williamson
Keith Lester	Susan Moritz	Katherine Prescott	Heather Shannon	Jean Tonascia	Kate Wilson
Bev Leve	Ian Morrison	Jeanne Price	Robin Sharp	Ruth J. Tonascia	Kathy Wilson
Joshua Levine	Paul Moschetti	Judy Prokupek	Carol J. Sheerin	Gwen Toney	Ken Wilson
Seela Lewis	Gerald Mugele	Lauri Puchall	Dalia Sheff	Joel Toste	Linda Wilson
Michele Liapes	Dianna Muhic	Maris Purvins	Jody Sherrard	Vicki Tribold	David Wimpfheimer
Eileen Libby	Dan Murphy	Lara Rachowicz	Mary Lynn Shimek	Mike Tracy	Marilyn Winkley
Karin Lienart	Joan Murphy	Barbara Ramsey	Richard B. Shipp	Nick Tracy	Wigay Wix
Nancy Lilly	Kathleen Murphy	Patricia Randall	Will Shonbrun	Kayla Trbovich	Pat Wolfe
Joan Lippman	Doug Murray	Raymond Rapp	Marjorie Siegel	William Trbovich	Bill Wolpert
Marcus Lipton	Margaret Murray	Alison Rayner-Hooson	Jean Simpson	Susan Tremblay	Carol L. Wood
Wayne Little	Karen J. Nagel	Joan Regan	Rachel Simpson	Millie Tripp	Patrick Woodworth
Pattie Litton	Angela Nardo-Morgan	Jeanne Reggio	Dolly Simunovich	Dale Trowbridge	Kathryn Wright
Ruth Lombard	James Nead	Jeff Reichel	Jane Sinclair	Louise Trudeau	Sherry Wright
Bert Lombino	Kim Neal	Linda Reichel	Paul Skaj	Thomas Tucker	Robert Yanagida
Carolyn Longstreth	Mike Nelligan	Paula Reid	Una Skelly	Joan Turner	Cindy Young
John Longstreth	Leonard Nelson	Don Reinberg	Christina Sloop	Kathleen Unti	Nancy Young
Susan Luber	Susan Nestor	Margot Reisner	Elliott Smeds	Julie Vader	Peter Young
Anthony Lucchesi	Mary Neuer Lee	Arlene Reiss	Austin Smith	Henning Van	Sarah Zainfeld
Ramon Lutzow	Wally Neville	Jean Rhodes	Ernestine I. Smith	Deusen-Jensen	Ingrid Zimmerman
Maureen Lynch	Zach Newman	Diana Rhoten	Daphne Smith	Lee Van Giesen	Suzanne Zimmerman
Nancy MacDonald			Joe Smith	Gerrit Van Sickle	Pnina Zoharah
Patricia Macias			Joseph Smith	Kelly Varian	Jill Zumwalt
Flora E. Maclise			Marjorie Smith	Carol Velluntini	Loretta Zweig
Barbara Madick			Pat Smith	Diane Verhoeve	
			Sally Smith	Natalia Vicino	



## THANK YOU TO OUR GENEROUS DONORS

### Private Donors and Charitable Trusts

Audubon Canyon Ranch thanks individual supporters who have made recent contributions.

We thank **Marty and Joyce Griffin** for launching the ACR Founders Campaign with a generous gift that will support advancement of ACR's three core program areas.

We appreciate **The John A. Sellon Trust**, the **Cobb Income Charitable Fund**, **Helen and Thomas Merigan Charitable Trust**, **Valerie Merrin & Bill Deyo**, and **G. Paul Matthews** for their grants toward ACR's programs and preserves in general.

We thank all our private donor and charitable trust ***Friends of Bouverie***, **Jan Gerrett Snedaker & Diane Krause** and **Noelle & Richard Bon**, for supporting the programs and preserves of the Bouverie Preserve. We are grateful for **Charles Greshamengelberg**, who has contributed a gift of general support to all three of Audubon Canyon Ranch's preserves.

We are grateful to **Binny & Charles Fischer** who made a gift toward a volunteer coordinator at ACR.

We thank all private donor and charitable trust members of our ***Partners in Education*** donor circle. With a generous gift from **Betsy & Bob Stafford**, we are in the process of acquiring a webcam for the Bolinas Lagoon Preserve, which will enhance ACR's environmental education programs. Additionally, we thank **Jane & Douglas Ferguson**, **Mardi Leland** and **Joel Toste** for their contribution toward Audubon Canyon Ranch's education programs.

We thank all our private donor and charitable trust ***Partners in Conservation***, **Jean Starkweather**,

**Carolyn Johnson & Rick Theis** and an anonymous donor, for their donations toward Audubon Canyon Ranch's Conservation Science and Habitat Protection (CSHP) Program.

We thank **Jim and Shirley Modini**, who have generously provided the foundation of support to begin the important work of guaranteeing the protection of California's natural heritage. The Modini Ranch is a wild and wonderful place and Audubon Canyon Ranch is fortunate and honored to be entrusted to carry on the legacy of conservation that the Modinis initiated more than half a century ago.

### Foundation and Corporate Support

Audubon Canyon Ranch thanks foundation and corporate supporters who have made recent contributions.

We thank all our foundation and corporate ***Partners in Conservation***. With a generous grant from the **Marin Community Foundation**, ACR hired a Marin Habitat Protection and Restoration Project Leader and began a collaborative habitat protection and restoration project within ACR's four canyons along the Bolinas Lagoon. Audubon Canyon Ranch is grateful to the **Dennis and Carol Ann Rockey Fund of the Marin Community Foundation** for providing the initial funding that allowed ACR to establish the David Bouverie Scholarship Fund, which provides academic scholarships to dedicated participants of Junipers, the junior naturalist program of the Bouverie Preserve. We are grateful to the **US Fish & Wildlife Service**, which supported vernal pool protection and restoration in and enabled the return of new life to Bouverie Preserve's endangered vernal pools.

We thank the **Frank A. Campini Foundation** for supporting ACR's deferred maintenance in consultation

with the Property and Conservation Committee.

We appreciate the **Bishop Pine Fund**, the **Jonas Family Foundation**, the **Outrageous Foundation**, **The San Francisco Foundation**, and the **Winifred & Harry B. Allen Foundation** for their grants toward ACR's programs and preserves in general.

We thank **The Safeway Foundation**, the **Robert J. & Helen H. Glaser Family Foundation** and the **Quigley/Hiltner Fund** for their support of ACR's environmental education programs through ACR's ***Partners in Education*** donor circle.

We thank all our foundation and corporate ***Friends of Bouverie*** for their support of the Bouverie Preserve. With a generous grant from the **Southern Sonoma County Resource Conservation District**, we launched Project GROW, a unique partnership with other conservation organizations to restore Bouverie Preserve's native oak woodlands. We thank the **Community Foundation Sonoma County** for their support to restore native habitat and protect native rare species at ACR's Sonoma County preserves. We thank the **Josephine Lawrence Hopkins Foundation** for their general support of the Bouverie Preserve. We also thank the **Lenore & Howard Klein Foundation** for their support of Junipers.

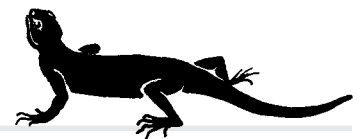
*Audubon Canyon Ranch is grateful for the generosity of all our supporters, as well as for the generous and invaluable gift of time from our hundreds of volunteers. We are deeply grateful for your commitment to the ACR mission.*



## Honoring our Past &amp; Celebrating the Future

## Calendar of Events

<p>Open to the Public § <b>Bolinas Lagoon Preserve</b></p>	<p><b>Saturdays, Sundays and Holidays</b> ~ March 20 to July 11, 2010 Weekends - Open 10:00 A.M. to 4:00 P.M. Weekdays (except Mondays): Open by reservation ~ Call 415.868.9244</p> <p>Come hike the more than eight miles of trails at Audubon Canyon Ranch's Bolinas Lagoon Preserve. Visit the newt ponds, view the nesting Great Blue Herons and Great Egrets and enjoy the wildflowers. Knowledgeable Ranch Guides will answer your questions.</p>
<p>Guided Nature Walks § <b>Bouverie Preserve</b></p>	<p><b>Saturdays</b> ~ March 13, April 17, May 1, May 8, 2010 9:30 A.M. to 1:30 P.M.</p> <p>Experience the beauty and rich natural history of this 500-acre preserve. Reservations required and accepted one month before each respective hike date: <a href="mailto:bouverie@egret.org">bouverie@egret.org</a> or 707.938.4554.</p> <p><i>Donations appreciated. § Docent Council of Bouverie Preserve</i></p>
<p>Spring &amp; Fall Work Days § <b>Bolinas Lagoon Preserve</b></p>	<p><b>Sunday</b>, March 7, 2010 ~ Picher Canyon <b>Saturday</b>, September 11, 2010 ~ Picher Canyon 9:15 A.M. - 1:00 P.M. ~ 1:00 P.M. - lunch</p> <p>Help us with trail and library work, pulling weeds, planting native flowers or cooking lunch (we provide). Bring your favorite tool and gloves for outdoor projects! Registration required: <a href="mailto:rsvp@egret.org">rsvp@egret.org</a> or 415.868.9244. § <i>ACR Staff</i></p>
<p>Docent Training § <b>Bolinas Lagoon Preserve</b></p>	<p><b>Wednesdays</b> ~ September 2010 to March 2011</p> <p>Become an ACR docent! Training for the next class of Bolinas Lagoon Preserve docents begins Sept. 1st. Classes meet once a week on Wednesdays for 24 weeks and discuss diverse topics including birds, insects, pond life and teaching techniques. Upon graduation, docents have the knowledge and confidence to lead field trips for schoolchildren. Orientations: June 16 &amp; August 25. Call 415.868.9244 for more information or to sign up for orientation.</p>
<p>Backyard Naturalist Series § <b>Bouverie Preserve</b></p>	<p><b>Saturdays</b> ~ 9:30 A.M. - 2:00 P.M.</p> <ul style="list-style-type: none"> <li>• March 27, 2010 - <b>Wildflowers</b> with Jeanne Wirka</li> <li>• April 10, 2010 - <b>Digital Nature Photography</b> with Bryant Hichwa</li> </ul> <p>Geared toward the adult amateur naturalist, these Saturday seminars include time in the classroom and on the trail. One to three mile hike on mildly- to moderately-strenuous terrain. Bring a bagged lunch and water for the trail. Class size is limited. \$25 per seminar. Registration required: <a href="mailto:rsvp@egret.org">rsvp@egret.org</a> or 415.868.9244.</p>
<p>Habitat Protection &amp; Restoration Workdays § <b>Bouverie Preserve</b></p>	<p><b>Mondays</b> ~ 8:30 A.M. to noon</p> <p>Bouverie Stewards work intimately with the land throughout the year at the Bouverie Preserve in Glen Ellen. This dedicated crew assists with all sorts of habitat protection and restoration work, while learning about the ecology behind the project. Examples include: removing Douglas Fir seedlings; removing invasive species; using GPS units to map invasive species. Call 707.935.8417 or e-mail Jen Potts at <a href="mailto:jpotts@egret.org">jpotts@egret.org</a></p>



More information on all these nature exploration opportunities is available at [www.egret.org](http://www.egret.org).

To keep up to date on the latest ACR happenings, **sign up for our e-newsletter**. Published once every two months, this free email newsletter highlights updates from the Preserves, including school group visits, latest findings from science staff, volunteer opportunities, and ways to come explore ACR's nature sanctuaries. To sign up or to view past issues, visit [www.egret.org](http://www.egret.org).



AUDUBON CANYON RANCH  
 4900 SHORELINE HIGHWAY ONE  
 STINSON BEACH, CA 94970  
 415.868.9244  
 www.egret.org  
 acr@egret.org

Honoring our Past  
 &  
 Celebrating the Future

**Audubon Canyon Ranch — wildlife sanctuaries and centers for nature education and research**  
 Bolinas Lagoon Preserve • Cypress Grove Research Center • Bouverie Preserve

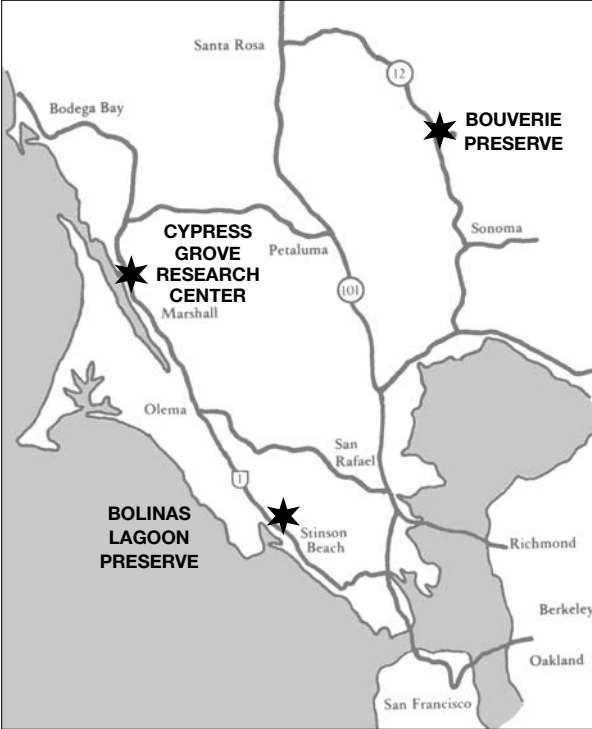
The headquarters of  
 Audubon Canyon Ranch is located  
 at the Bolinas Lagoon Preserve.  
 www.egret.org  
 email: acr@egret.org

**WHEN TO VISIT**

**Bolinas Lagoon Preserve**  
 Mid-March to mid-July: Saturday, Sunday  
 and holidays. 10:00 A.M. to 4:00 P.M.  
 Weekdays by appointment only;  
 415.868.9244. Closed Mondays.  
 Bolinas Lagoon Preserve is adjacent to  
 Bolinas Lagoon on Shoreline Highway One,  
 three miles north of Stinson Beach.

**Cypress Grove Research Center**  
 By appointment only. 415.663.8203

**Bouverie Preserve**  
 See calendar of events inside.



The Audubon Canyon Ranch  
 Bulletin is published twice yearly  
 as a free offering to ACR donors  
 and supporters.

Edited by Jennifer Newman  
 Designed by Claire Peaslee  
 Drawings by Ane Carla Rovetta  
 Unless otherwise indicated,  
 photos are property of ACR.  
 © 2010 Audubon Canyon Ranch  
 Printed on recycled paper (30% post-  
 consumer) using soy-based inks.