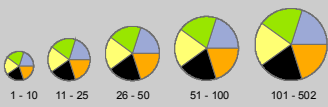
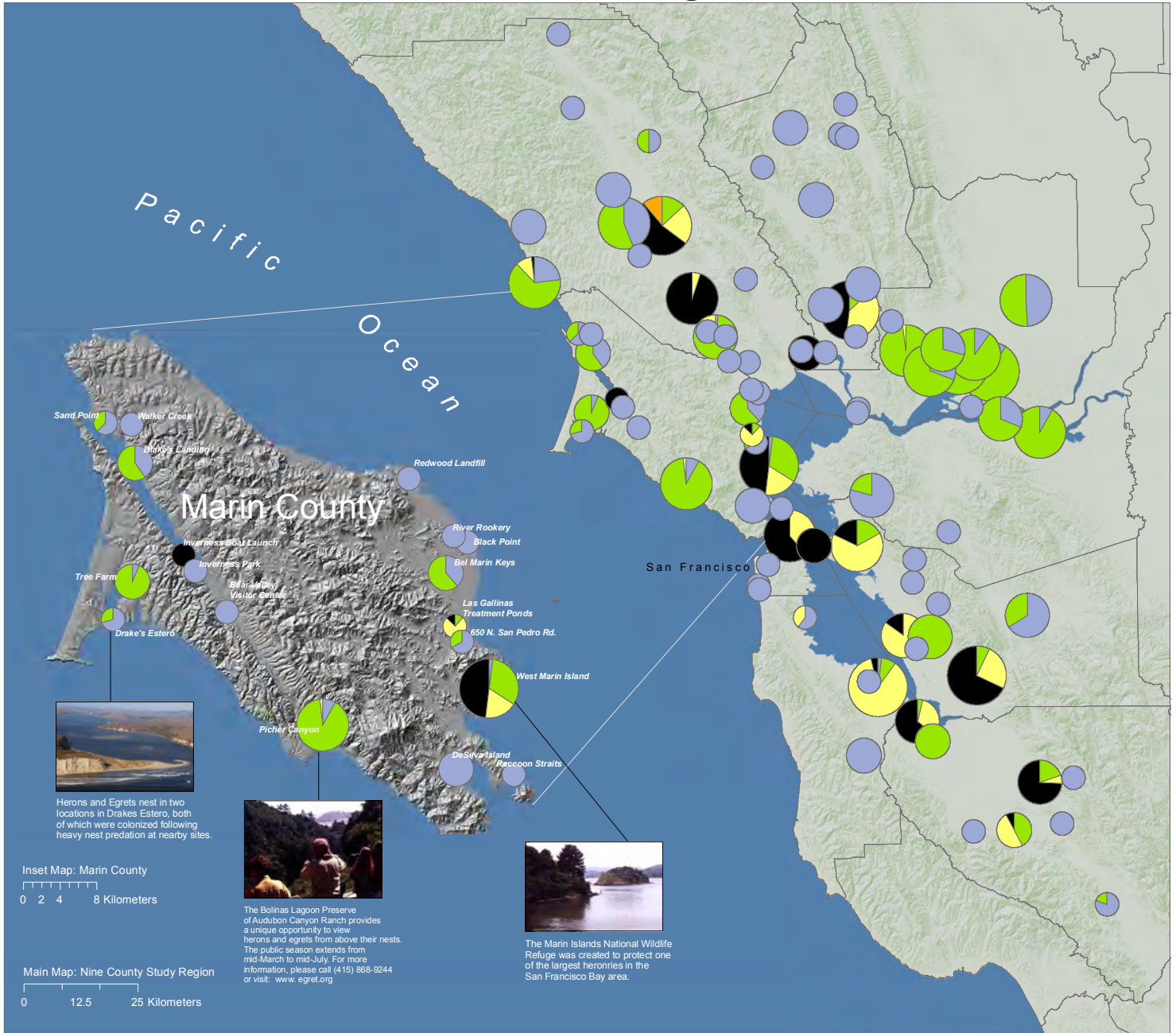
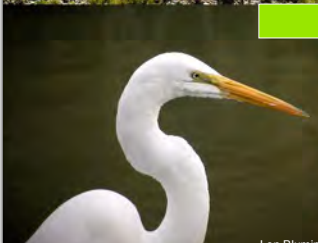
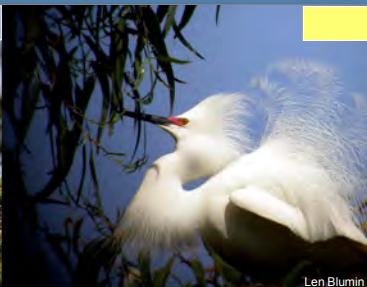


Heron and Egret Nesting Colonies in San Francisco Bay Area in 2005



- Diameter of pie chart reflects the total number of active nests for all species within each nesting site
- Great Blue Heron *Ardea herodias*
 - Snowy Egret *Egretta thula*
 - Great Egret *Ardea alba*
 - Black-crowned Night Heron *Nycticorax nycticorax*
 - Cattle Egret *Ardea ibis*

Map projection is UTM Zone 10 Nad 83. The center of each pie chart represents the geographic center of known nesting sites within 1 m accuracy. Nest abundance and species composition fluctuate annually within sites. This information plus estimates of nesting success and reproductive output for known colonies will be published in 2006 in a regional atlas (text on right side). This map is not for navigation and many sites are on private property. Reprinting, use, or reference requires written permission from Audubon Canyon Ranch.



Analysis of fifteen years of observations from heronries in nine San Francisco Bay area counties will be presented in a regional atlas in 2006. The atlas is a collaborative effort by Audubon Canyon Ranch and the San Francisco Bay Bird Observatory. Trained volunteers contributed to this and other ACR research projects.

For more information about the atlas or the Conservation Science and Habitat Protection program, please contact Cypress Grove Research Center of Audubon Canyon Ranch, or go to: www.egret.org.

Audubon Canyon Ranch
Cypress Grove Research Center
P.O. Box 808
Marshall, CA 94940
(415) 663-8203

Katie Etienne and John Kelly of Audubon Canyon Ranch, and Cheryl Strong of the San Francisco Bay Bird Observatory, with mapping assistance from Joseph Kinyon of the Pacific Coast Science and Learning Center of the National Park Service.

SFBBBO
San Francisco Bay Bird Observatory
P.O. Box 247
1230 Hope Street
San Francisco, CA 95002
(408) 946-6548